

# Contemporary Strategies in Community Practice:

promoting the dignity, worth and social wellbeing of individuals, groups and communities in transition.

Global Agenda for Social Work and Community Development  
[www.globalsocialagenda.org](http://www.globalsocialagenda.org)

**12-26 July 2015**



**University  
of Worcester**

Community Practice Academic and  
CPD Awards Series



Experiment in  
International  
Living UK



**Community First**  
Building better communities

In Herefordshire & Worcestershire

Contemporary models of practice, theory and research delivered by academics at the University of Worcester summer school in conjunction with colleagues from Experiment in International Living and Community First.

# Institute of Health & Society

## University of Worcester

### Community Practice Academic and CPD Awards Series

#### 12-26 July 2015

The programme is available as a 2 week residential summer school with flexible study programmes for undergraduate, postgraduate and CPD Award practitioners and researchers.

#### Participants will receive:

- A certificate of attendance accredited by the University of Worcester.
- A certificate of attendance at the summer school conference 23 July.
- Students studying at Level 7 (postgraduate) will gain 10 ECTS transferable onto a range of Community Practice Vocational Awards at the University of Worcester at Postgraduate Certificate, Postgraduate Diploma and Masters level. (For study requirements, please contact Programme Lead, Joy Gauci: [j.gauci@worc.ac.uk](mailto:j.gauci@worc.ac.uk))

*"I have come to respect, appreciate and love the diversity that makes our communities so rich. I am particularly drawn towards working with human rights issues, homeless and refugee concerns and the studying about community work in different environments has met my needs and enhanced my professional journey. The teaching was excellent. Learning in a small group was interactive and enriching. Seminars with organisations that work directly with service users and practitioners provided methods of contemporary interventions. My lecturer was always available for me when I needed help.*

*I am applying the knowledge awarded at my place of work with migrant young people and this is recognised and appreciated by my senior management."* - Lawrence Shonhiwa (Summer 2014)



Participants will join with local and international practitioners, students, researchers and community representatives to develop skills in contemporary community practice.

#### Specialised 3 day intensive training workshops:

1. Community development 13 - 15 July
2. Peace building and conflict resolution 16, 17, 20 July
3. Therapeutic responses to Domestic Violence 21 - 23 July.

**\* Workshops can be accessed separately in up to 3 x 3 day series if required. £95.00 per day.**

#### Engaging in seminars, debates, practice visits and skills based workshops to develop skills in practice with:

- Young unaccompanied migrants
- Young children with emotional needs
- Looked after children
- Families in distress or breakdown
- Victims of oppression and abuse
- Children at risk of trafficking
- Young carers
- Families and individuals living in or migrant from conflict zones
- Human experiences of mental health and emotional distress.

### The package price of £1,300 includes:

- 45 hours academic tuition and practice skills
- Bed and Breakfast accommodation in self-catering flats
- Skills based workshops in practice settings
- Social programme and cultural events including local heritage sites, festivals, music and storytelling from around the world.
- Optional weekend trips to places of local and historic interest
- Airport transfer from Birmingham International Airport

### REGISTRATION

Registration ends: 30 May 2015.

The University of Worcester reserves the right to cancel the course if insufficient numbers register by 30 May.

### WORCESTER – global issues in a very English city

The University of Worcester has a rich heritage in vocational training awards and innovative community partnerships responding to the global needs of its rural and urban populations.

Worcester is a historic cathedral city on the banks of the River Severn. Situated mid-way between the multi-cultural city of Birmingham and the beautiful walking country of the historic Welsh Marches it has easy access to Stratford-upon-Avon, Oxford, Cardiff, Bristol and London. You will have opportunities to socialise with other students, to participate in weekend trips and to extend your stay for individual travel opportunities.

As a student on the summer school you will have access to all university resources including our unique multi-media library, The Hive, and our Health and Wellbeing Centre.

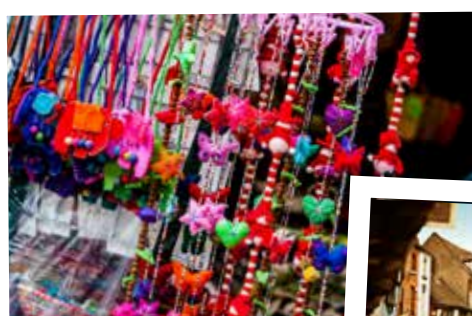


### INDICATIVE TIMETABLE:

| Date              | am  | pm                    | evening                                    |
|-------------------|---|-----------------------|--|
| Sunday 12 July    | Arrive - Birmingham International Airport                     |                       |  |
| Monday 13 July    | Induction Workshop  | Worcester Orientation | Welcome meal                               |
| Tuesday 14 July   | Workshop 1  | Workshop 1            |  |
| Wednesday 15 July | Workshop 1  | Workshop 1            |  |
| Thursday 16 July  | Practice based workshops                                      |                       |  |
| Friday 17 July    | Workshop 2  | Workshop 2            |  |
| Saturday 18 July  | Optional trip   |                       |  |
| Sunday 19 July    | Free day  |                       |  |
| Monday 20 July    | Workshop 2  | Workshop 2            |  |
| Tuesday 21 July   | Practice visits   |                       | Arts workshop meal and story telling event |
| Wednesday 22 July | Workshop 3  | Workshop 3            |  |
| Thursday 23 July  | Workshop 3  | Workshop 3            |  |
| Friday 24 July    | Conference  |                       | Farewell meal                              |
| Saturday 25 July  | Optional Trip   |                       |  |
| Sunday 26 July    | Depart – airport transfer to Birmingham International Airport |                       |  |

For expressions of interest and / or an application form please contact: [j.gauci@worc.ac.uk](mailto:j.gauci@worc.ac.uk)





For expressions of interest and / or an application form  
please contact: [j.gauci@worc.ac.uk](mailto:j.gauci@worc.ac.uk)

[www.worcester.ac.uk](http://www.worcester.ac.uk)